



The new generation of sliding glass door systems

# MasterTrack<sup>®</sup> Sliding Doors

Maximum comfort. Minimal installation effort.

# NEW STANDARDS IN TECHNOLOGY, DESIGN AND COMFORT

---

Modern interior design calls for holistic room concepts that combine minimalist design with maximum comfort. While good design is recognisable at first glance, comfort is usually in the detail and only becomes clear with use.

This is also the case with the high-tech solution from MasterTrack®. The high-quality look of the system goes hand in hand with sophisticated sliding door technology. It is made up of three components: track, roller system and clamping mechanism, and makes both installation and use particularly easy.

Using sliding glass doors is not only a space-saving design device but they are also ideal as room dividers and visual features in generously designed living areas. This is the case for classic wall mounting, as a telescopic solution or for mounting flush with the ceiling.

With MasterTrack® you have the right system for every application.





# MASTERTRACK® FT

---

MasterTrack® FT Wall Mounting	6
MasterTrack® FT Ceiling Mount	10
MasterTrack® FT Ceiling Mount with Sidelite	12
MasterTrack® FT Accessories	16

# MASTERTRACK® BT

---

MasterTrack® BT Recessed & Wall Mount with Sidelite	18
MasterTrack® BT Flush	20
MasterTrack® BT Accessories	22

# ADDITIONAL PRODUCTS

---

Ladder Pulls	26
Flush Mount Handles	27
Bohle Duplocoll®	27

# MASTERTRACK® FT

---

With MasterTrack® FT, Bohle offers a high-tech complete solution for sliding door systems that impresses with revolutionary running gear and noticeable smoothness. The special feature: the entire assembly requires only a few simple steps. Installation is quick, intuitive and cost-saving.



# MASTERTRACK® BT

The special design of the MasterTrack® BT sliding door series is used when the installation requires more than a simple ceiling or wall mounting. With MasterTrack® BT's modular system, there are no limits to the room design. With only a few individual components and the compact track in which the glass clamp is located below the carriage, single and multi-panel doors as well as flush ceiling designs can be installed in no time at all.

## Compact running track

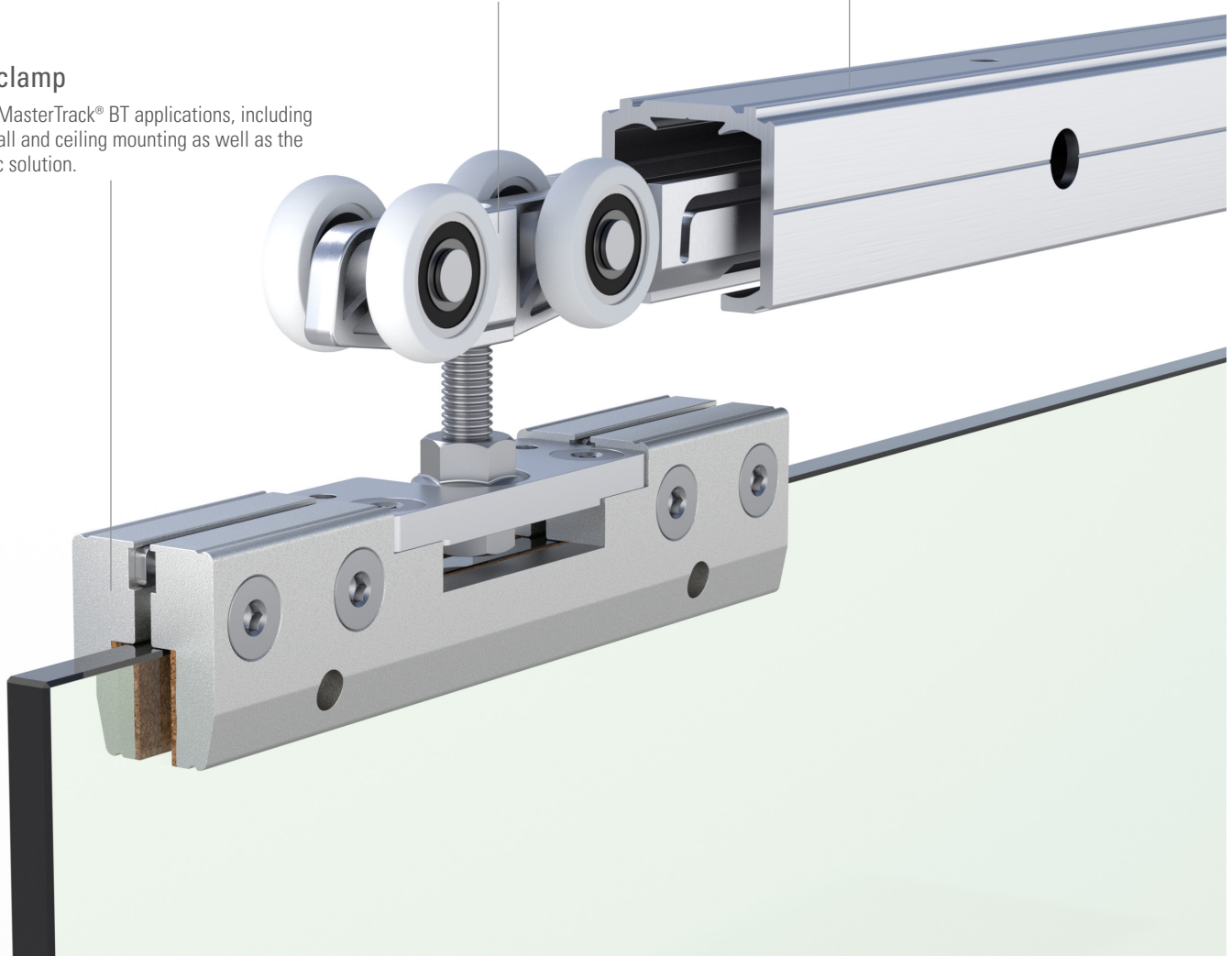
Suitable for various applications, for example, as a two- or three-panel telescopic solution or for flush ceiling installation.

## Rollers with retraction damping

The sliding door is gently and smoothly slowed down in one movement by the dampers. One retraction damper replaces one standard runner.

## Glass clamp

For most MasterTrack® BT applications, including classic wall and ceiling mounting as well as the telescopic solution.





# MASTERTRACK® FT WALL MOUNT

---

## Product highlights

- Impressively smooth running
- Smooth closing mechanism
- Safe anti-jump protection
- Elegant appearance in the weight classes 176 lbs and 330 lbs
- Intuitive and cost-saving assembly
- All settings conveniently accessible from the front
- Modular design in all weight classes
- Metal shock absorbers with high-quality hydraulics and double-sided
- Synchronously opening systems possible



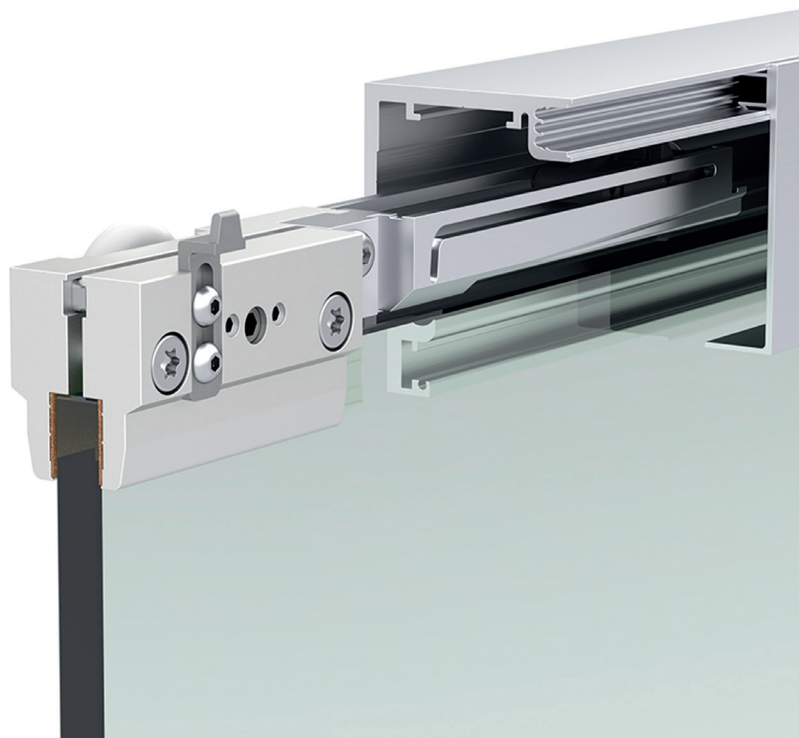
1 slider wall mounting



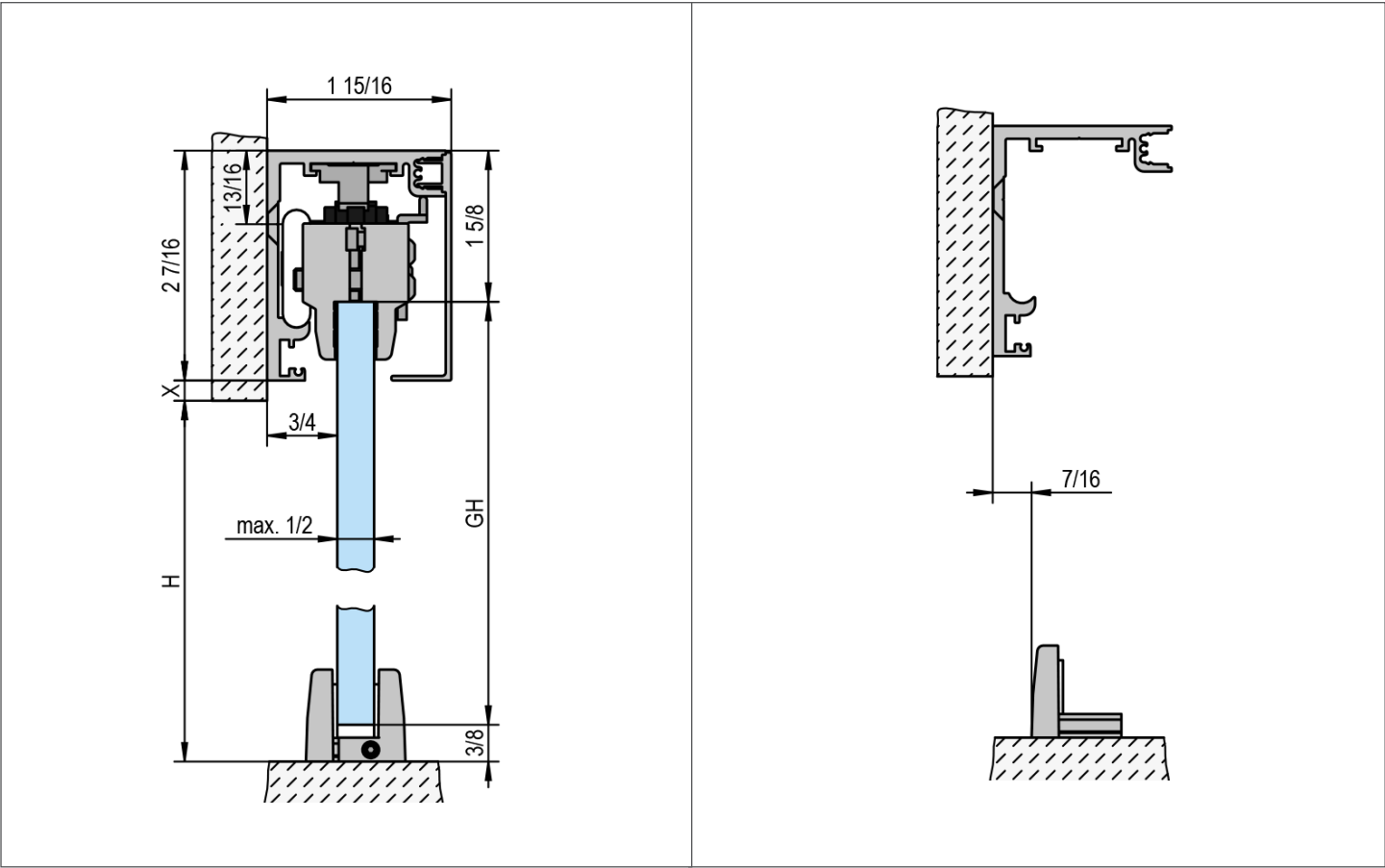
1 slider wall mounting on glass



2 slider synchro without fixed glazing wall mounting



# MasterTrack® FT Wall Mount



Glass height (GH) = H + X + 7/16" (or 11.5 mm)

LENGTH	FINISH	WEIGHT CAPACITY	ITEM
78-11/16" (2 m)	Clear Anodized	176 lbs	BO 5782011
78-11/16" (2 m)	Matte Black Anodized	176 lbs	BO 5782013
118" (3 m)	Clear Anodized	330 lbs	BO 5753011
118" (3 m)	Matte Black Anodized	330 lbs	BO 5753013
118" (3 m)	Brushed Stainless Anodized	330 lbs	BO 5753014
157" (4 m)	Clear Anodized	330 lbs	BO 5754011
157" (4 m)	Matte Black Anodized	330 lbs	BO 5754013
157" (4 m)	Brushed Stainless Anodized	330 lbs	BO 5754014

INCLUDED IN DELIVERY	
1x	Top Track
1x	Cover
2x	Roller Set
2x	Damping Mechanism
1x	Floor Guide
2x	End Caps for Wall Mount Profile

Bohle MasterTrack® FT Wall Mount Extrusion Set



LENGTH	FINISH	ITEM
236" (6 m)	Clear Anodized	BO 5706011
236" (6 m)	Matte Black Anodized	BO 5706013
236" (6 m)	Brushed Stainless Anodized	BO 5706014

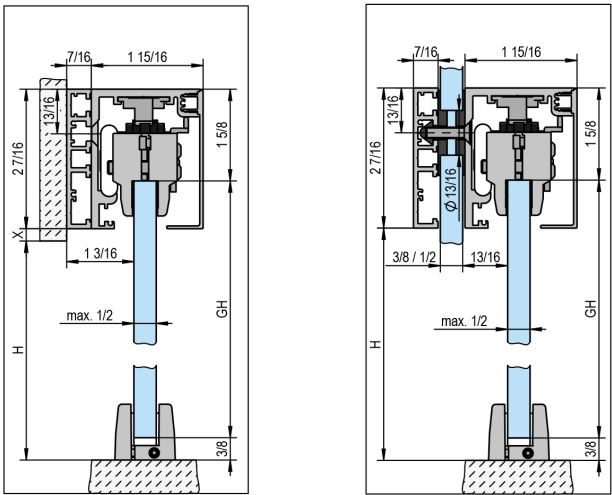
INCLUDED IN DELIVERY	
1x	Top Track
1x	Cover

Wall Mount Spacer and Glass Mount Adapter



The multi-purpose wall mount profile is used to provide an additional 9/16" (11 mm) clearance for complex site-conditions such as base boards or molding. In addition, the wall mount profile can be attached to transom glass walls using the glass mount accessory kit.

LENGTH	FINISH	ITEM
78-11/16" (2 m)	Distance Profile, Clear Anodized	BO 5702001
78-11/16" (2 m)	Distance Profile, Matte Black Anodized	BO 5702003
157" (4 m)	Distance Profile, Clear Anodized	BO 5704001
157" (4 m)	Distance Profile, Matte Black Anodized	BO 5704003
78-11/16" (2 m)	Wall Mount Spacer kit, for up to 78" (2 m)	BO 5700007
78-11/16" (2 m)	Glass Mount Spacer kit, for up to 78" (2 m)	BO 5700008





# MASTERTRACK® FT CEILING MOUNT

## Product highlights

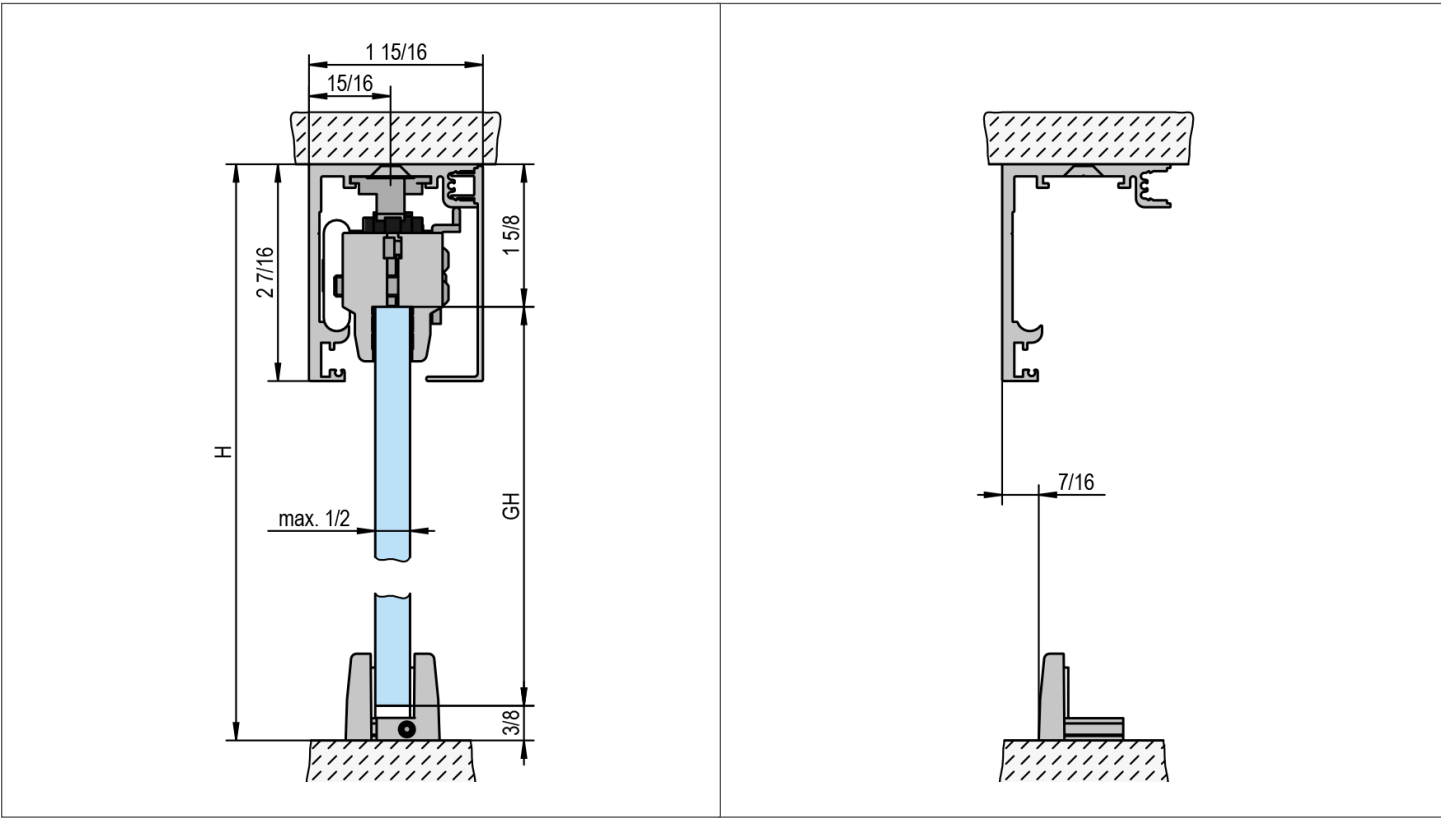
- Impressive running smoothness
- Exceptional ease of movement
- Smooth closing mechanism
- Safe anti-jump protection
- Elegant appearance in the weight classes 176 lbs and 330 lbs
- Intuitive and cost-saving assembly
- All settings conveniently accessible from the front
- Modular design in all weight classes
- Metal shock absorbers with high-quality hydraulics and double-sided
- Synchronously opening systems possible



1 slider without fixed glazing  
ceiling mounting



2 slider synchro without fixed glazing  
ceiling mounting



Glass height (GH) = H - 2" (or 51 mm)

LENGTH	FINISH	WEIGHT CAPACITY	ITEM
78-11 1/16" (2 m)	Clear Anodized	176 lbs	BO 5782021
78-11 1/16" (2 m)	Matte Black Anodized	176 lbs	BO 5782023
118" (3 m)	Clear Anodized	330 lbs	BO 5753021
118" (3 m)	Matte Black Anodized	330 lbs	BO 5753023
118" (3m)	Brushed Stainless Anodized	330 lbs	BO 5753024
157" (4 m)	Clear Anodized	330 lbs	BO 5754021
157" (4 m)	Matte Black Anodized	330 lbs	BO 5754023
157" (4m)	Brushed Stainless Anodized	330 lbs	BO 5754024

INCLUDED IN DELIVERY	
1x	Top Track
1x	Cover
2x	Roller Set
2x	Damping Mechanism
1x	Floor Guide

### Bohle MasterTrack® FT Ceiling Mount Extrusion Set



LENGTH	FINISH	ITEM
236" (6 m)	Clear Anodized	BO 5706021
236" (6 m)	Matte Black Anodized	BO 5706023
236" (6 m)	Brushed Stainless Anodized	BO 5706024



# MASTERTRACK® FT CEILING MOUNT WITH SIDELITE

---

## Product highlights

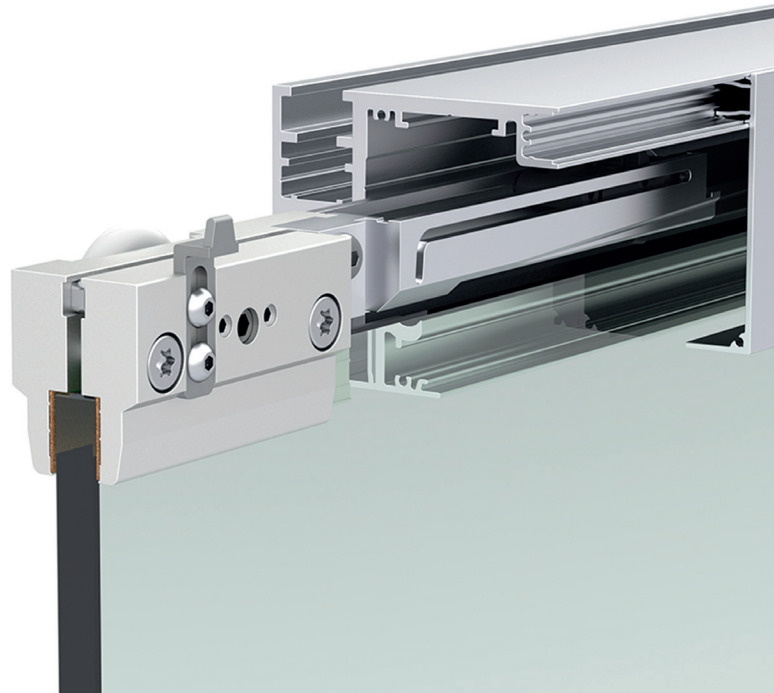
- Impressive running smoothness
- Exceptional ease of movement
- Smooth closing mechanism
- Safe anti-jump protection
- Elegant appearance in the weight classes 176 lbs and 330 lbs
- Intuitive and cost-saving assembly
- All settings conveniently accessible from the front
- Modular design in all weight classes
- Metal shock absorbers with high-quality hydraulics and double-sided
- Synchronously opening systems possible



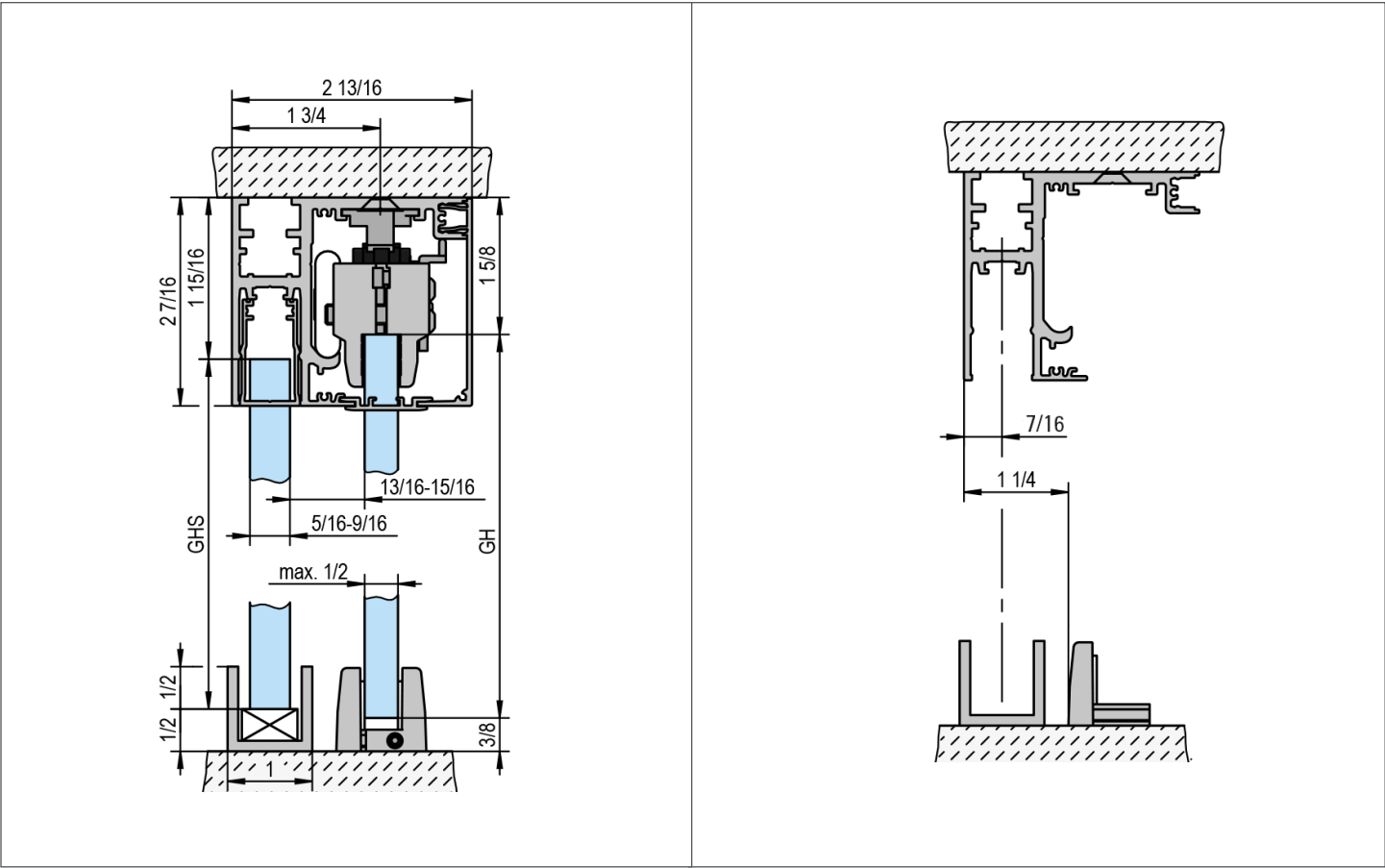
1 slider with fixed glazing ceiling mounting



2 slider synchro with fixed glazing ceiling mounting



# MasterTrack® FT Ceiling Mount with Sidelite



Glass height (GH) = H + X + 7/16" (or 11.5 mm)

LENGTH	FINISH	WEIGHT CAPACITY	ITEM
118" (3 m)	Clear Anodized	330 lbs	BO 5753031
118" (3 m)	Matte Black Anodized	330 lbs	BO 5753033
118" (3m)	Brushed Stainless Anodized	330 lbs	BO 5753034
157" (4 m)	Clear Anodized	330 lbs	BO 5754031
157" (4 m)	Matte Black Anodized	330 lbs	BO 5754033
157" (4 m)	Brushed Stainless Anodized	330 lbs	BO 5754034

\*Note: Does not include bottom sidelite channel, nor top and bottom gasket material. See page 15 if these are required.

INCLUDED IN DELIVERY *	
1x	Top Track
1x	Cover
2x	Roller Set
2x	Damping Mechanism
1x	Floor Guide
1x	Snap Frame for Fixed Profile

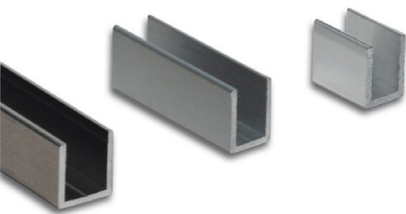
Bohle MasterTrack® FT Ceiling Mount Extrusion Set



LENGTH	FINISH	ITEM
236" (6 m)	Clear Anodized	BO 5706031N
236" (6 m)	Brushed Stainless Anodized	BO 5706034N
236" (6 m)	Matte Black Anodized	BO 5706033

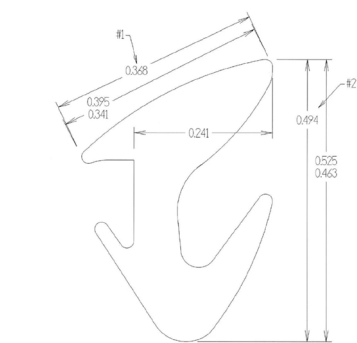
INCLUDED IN DELIVERY	
1x	Top Track
1x	Cover

Bohle Sidelite U-Channel



LENGTH	FINISH	ITEM
1" x 1" x 120"	Matte Black Anodized	BA 6703447
1" x 1" x 120"	Brushed Stainless Anodized	BA 6703446
1" x 1" x 120"	Satin Anodized	BA 6703444

Bohle Sidelite Gasketing



DESCRIPTION	LENGTH	FOR GLASS THICKNESS	ITEM
Roll-In Gasket	20'	3/8"	BA 6703440
Roll-In Gasket	20'	1/2"	BA 6703441

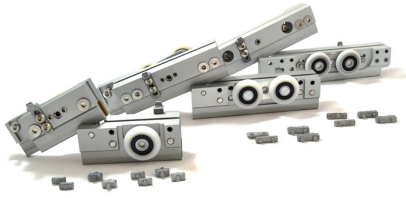
Soffit Cover



LENGTH	FINISH	ITEM
98-3/4"	Clear Anodized	BO 5702541
98-3/4"	Matte Black Anodized	BO 5702543

# MasterTrack® FT Accessories

## Bohle MasterTrack® FT Carriage Set Including Damping Mechanism



Can be used to upgrade complete door kits to double door systems. The innovative damper slows down the sliding door softly and seamlessly in one movement. The dampers are always constructed identically, ranging from the light to the heavy weight classes. The only difference: they vary in length in order to enable optimal damping and retracting of the different weight classes.

MAX. DOOR WEIGHT	MINIMUM DOOR WIDTH	ITEM
176 lbs (80 kg)	31-1/8 in (790 mm)	BO 5708000
330 lbs (150 kg)	35-5/8 in (905 mm)	BO 5701500

INCLUDED IN DELIVERY	WALL MOUNT	CEILING MOUNT	CEILING MOUNT WITH SIDELITE
Roller Set	2x	2x	2x
Damping Mechanism	2x	2x	2x
Trigger for Damping Mechanism	2x	2x	2x

## MasterTrack® FT & MasterTrack® BT Bottom Guide



The bottom guide consists of two separate pieces. Suitable for both MasterTrack® FT and BT applications.

FINISH	ITEM
Clear Anodized	BO 5700005
Matte Black Anodized	BO 5700010
Brushed Stainless Anodized	BO 5700024

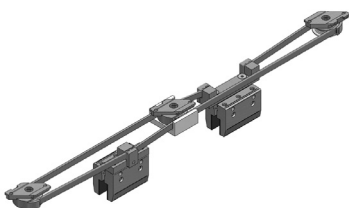
## Bohle MasterTrack® FT Cover Cap Set



Two cover caps included in delivery set.

FINISH	INSTALLATION	ITEM
Satin Anodized	Wall / Ceiling Mount	BO 5700011
Matte Black Anodized	Wall / Ceiling Mount	BO 5700013
Brushed Stainless Anodized	Wall / Ceiling Mount	BO 5700014
Satin Anodized	Ceiling with Sidelite Mount	BO 5700031N
Matte Black Anodized	Ceiling with Sidelite Mount	BO 5700033N
Brushed Stainless Anodized	Ceiling with Sidelite Mount	BO 5700034N

## Bohle MasterTrack® FT Accessory Set Synchro



Used to operate two doors simultaneously, the synchro kit attaches to the roller hardware through a toothed pulley cable.

Please note minimum door widths: MasterTrack® 80: 34" (865 mm)  
MasterTrack® 150: 38-1/2" (980 mm)

DESCRIPTION	ITEM
Suitable for all Bohle MasterTrack® FT Systems	BO 5700020

Center Lock Housing



- Lock including strike plate
- Hook bolt type
- Double 17mm euro keyed cylinder included
- Stainless steel #304 cover caps and strike plate
- Glass fabrication (lock):
  - Depth: 2-9/16" (65 mm)
  - Height: 4-15/16" (125 mm)
  - Radius corners: 1/2" (12.7 mm)

GLASS THICKNESS	FINISH	DIMENSIONS	ITEM
3/8" - 1/2"	Brushed Stainless	3-15/16" W x 5-5/8" H x 1" D	BO 5214666

Packaging: 1 set



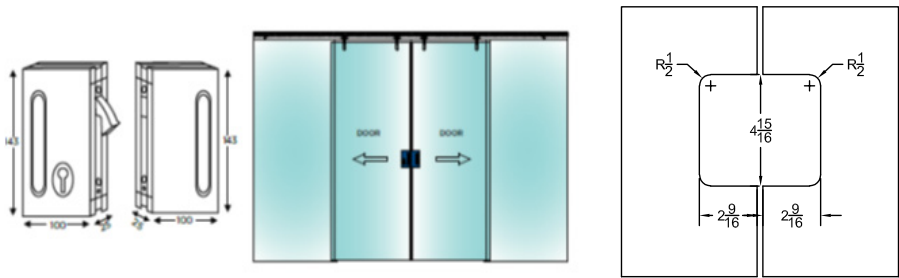
Center Lock Housing



- Lock including strike box
- Hook bolt type
- Double 17mm euro keyed cylinder included
- Suitable for bi-parting doors
- Stainless steel #304 cover caps
- Glass fabrication (lock / strikebox):
  - Depth: 2-9/16" (65 mm)
  - Height: 4-15/16" (125 mm)
  - Radius corners: 1/2" (12.7 mm)

GLASS THICKNESS	FINISH	DIMENSIONS	ITEM
3/8" - 1/2"	Brushed Stainless	3-15/16" W x 5-5/8" H x 1" D	BO 5214667

Packaging: 1 set



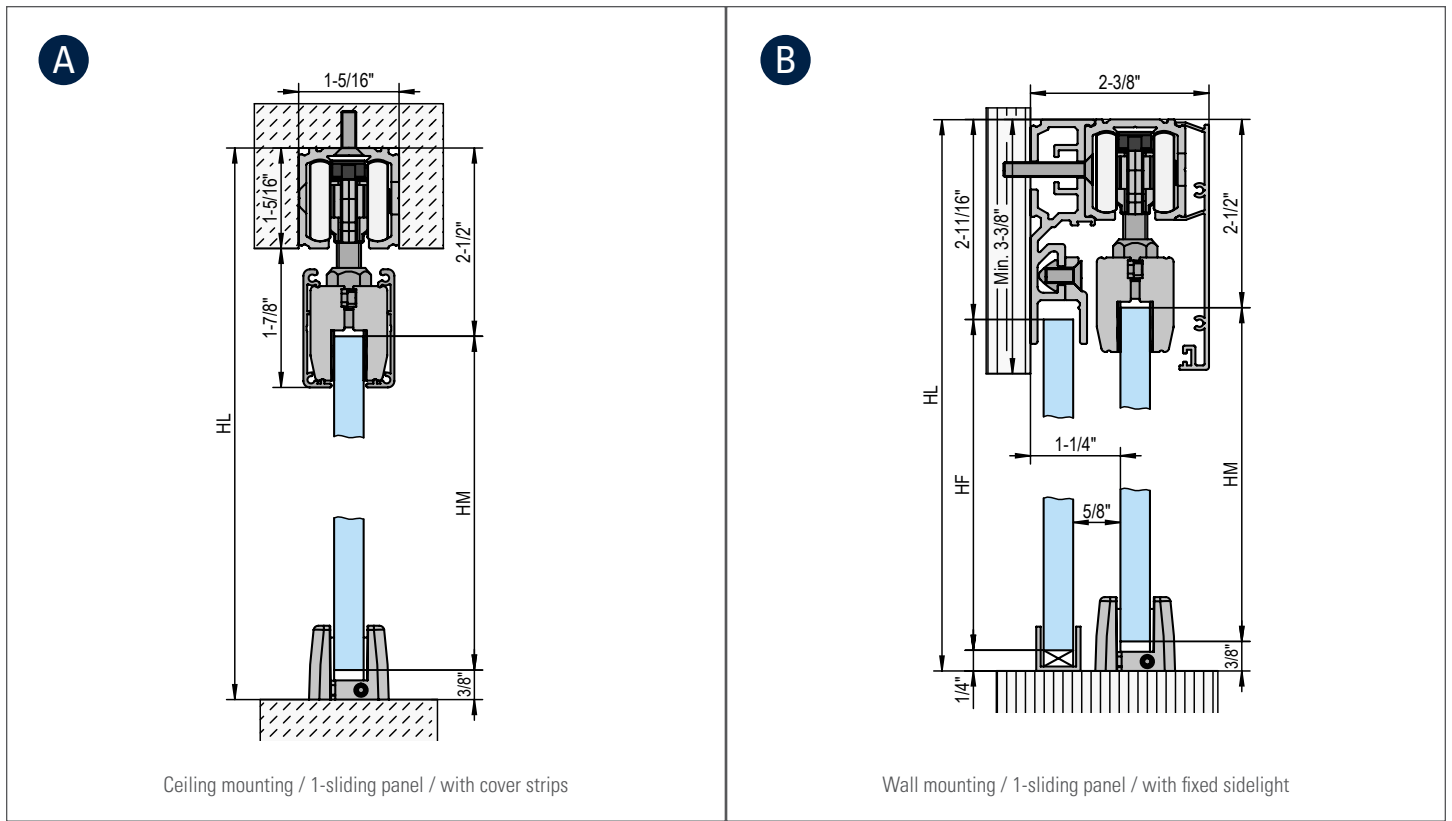


# MASTERTRACK® BT RECESSED & WALL MOUNT WITH SIDELITE

## Product highlights

- Simple glass clamping mechanism for a secure hold
- Installation with and without fixed glazing
- Height adjustment +/- 1/8" (+/- 3 mm)
- Smooth closing mechanism
- Safe anti-jump protection
- Optional metal damper with high-quality hydraulics and double-sided spring guide
- Synchronous opening possible





Glass height (HM) & Fixed sidelite (HF) = HL - 2-7/8"

PRODUCT	ITEM	A	B
Running track 78" / 118" / 157" / 236"	BO 5802011 / 5803011 / 5804011 / 5806011	1x	1x
Supplementary profile for fixed sidelights 78"	BO 5802031		*
Snapframe and cover caps for pair of glass clamps	BO 5801271	1x	
Carriages (set of 2x)	BO 5800002	1x	1x
Carriages incl. damping mechanism (set of 1x)**	BO 5800120	2x**	2x**
Glass clamp	BO 5800001	2x	2x
Cover 3-1/4" height 78" / 118" / 157" / 236"	BO 5802021 / 5803021 / 5804021 / 5806021		1x
Bottom guide	BO 5700005	1x	1x
U-Channels 10'	BA 6703444		1x

\*\* Quantity depends on the length of the Running Track

\*\* Alternative to carriages BO 5800002 - The carriages are integrated in the retractable dampers. To install damping on both sides, two carriages are replaced by two retractable dampers.

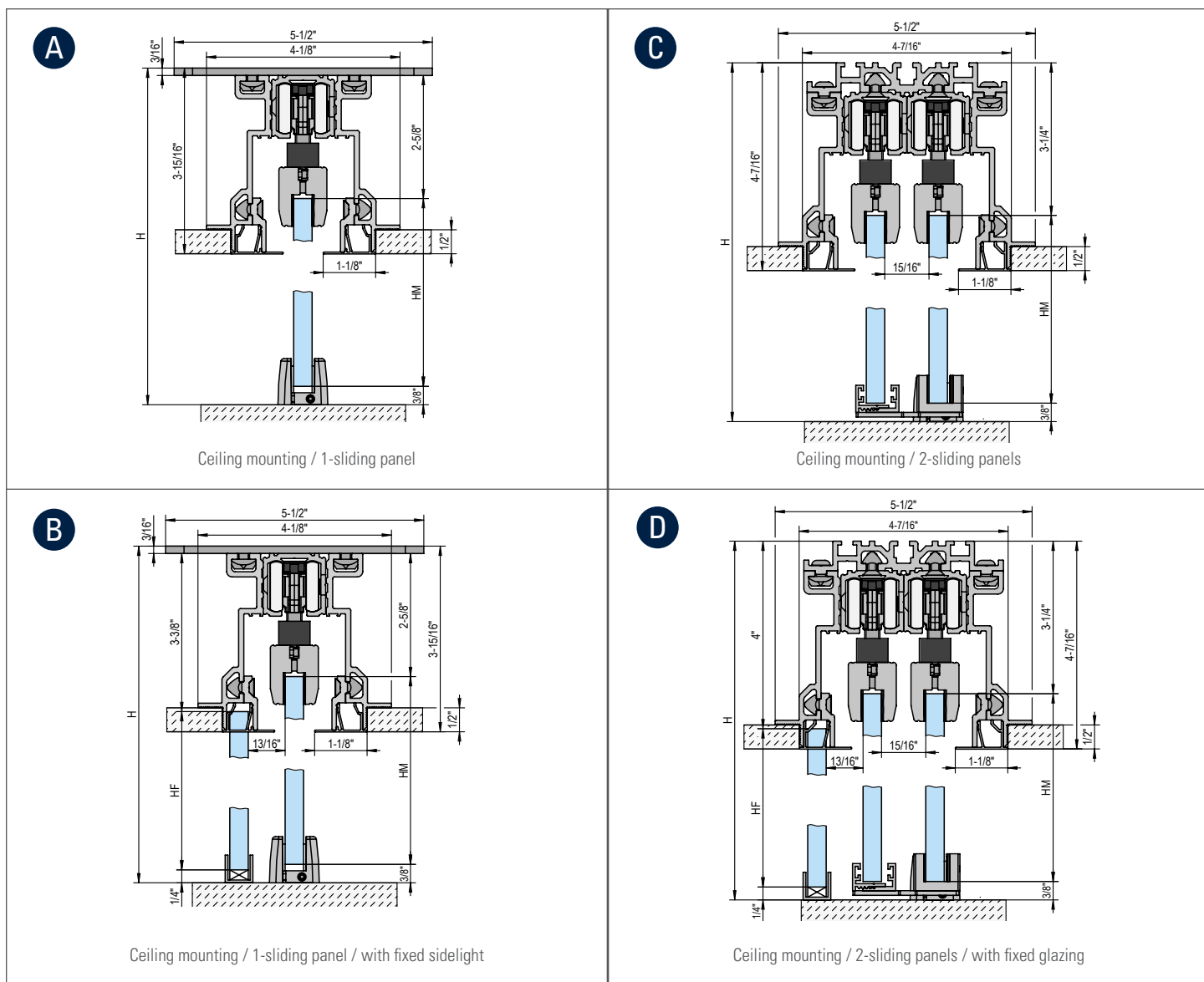


# MASTERTRACK® BT FLUSH MOUNTING

## Product highlights

- Installation with and without fixed glazing
- Simple glass clamping mechanism for secure hold
- Height adjustment +/- 1/8" (+/-3 mm)
- Smooth closing mechanism
- Safe anti-jump protection
- Revision of components possible at any time
- Floating floor guide with two-lane solution
- 2-panel version incl. driver function
- Optional metal damper with high-quality hydraulics and double-sided spring guide





A & B

Glass height (HM) =  $H - 3\frac{3}{16}$ "

Glass fixed part (HF) =  $H - 3\frac{13}{16}$ "

C & D

Glass height (HM) =  $H - 3\frac{5}{8}$ "

Glass fixed part (HF) =  $H - 4\frac{1}{4}$ "

PRODUCT	ITEM	A	B	C	D
Running track 78" / 118" / 157" / 236"	BO 5802011 / 5803011 / 5804011 / 5806011	1x	1x	2x	2x
Extrusion set flush for 1x running track	BO 5803051 / 5806051	1x	1x		
Extrusion set flush for 2x running tracks	BO 5803061 / 5806061			1x	1x
Carriages (set of 2x)	BO 5800002	1x	1x	2x	2x
Carriages incl. damping mechanism (set of 1x)*	BO 5800120	2x*	2x*	4x*	4x*
Clamp set for flush with 1 sliding door	BO 5800011	1x	1x		
Clamp set for flush with 2 sliding doors	BO 5800012			1x	1x
U-Channels 10'	BA 6703444		1x	1x	

\* Alternative to BO 5800002 carriages - the carriages are integrated in the retractable dampers. To install damping on both sides, two carriages are replaced by two retractable dampers.

# MasterTrack® BT Accessories

## MasterTrack® BT Running Track

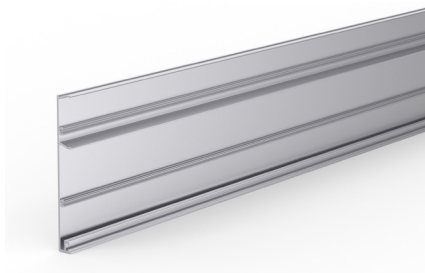


The running tracks of the MasterTrack® BT series are versatile in use, e.g. as telescopic application with two or three doors or for flush installation with the wall or ceiling. In addition, it can be used for classical wall or ceiling installations.

- Max. door weight: 264.5 lbs (120 kg)
- Suitable for all MasterTrack® BT applications

APPLICATION	LENGTH	FINISH	ITEM
Standard / Telescopic	78-3/4" (2000 mm)	Clear Anodized	BO 5802011
Standard / Telescopic	118-3/32" (3000 mm)	Clear Anodized	BO 5803011
Standard / Telescopic	157-15/32" (4000 mm)	Clear Anodized	BO 5804011
Standard / Telescopic	236-7/32" (6000 mm)	Clear Anodized	BO 5806011

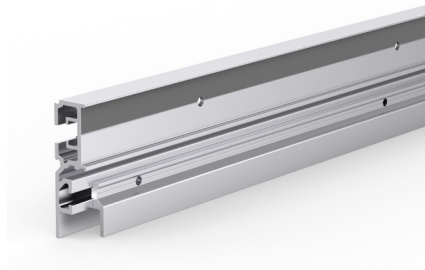
## MasterTrack® BT Cover



Cover for attachment to the MasterTrack® BT running track. Suitable for standard wall and ceiling mounting applications.

APPLICATION	HEIGHT	LENGTH	FINISH	ITEM
Standard	3-9/32" (83 mm)	78-3/4" (2000 mm)	Clear Anodized	BO 5802021
Standard	3-9/32" (83 mm)	118-3/32" (3000 mm)	Clear Anodized	BO 5803021
Standard	3-9/32" (83 mm)	157-15/32" (4000 mm)	Clear Anodized	BO 5804021
Standard	3-9/32" (83 mm)	236-7/32" (6000 mm)	Clear Anodized	BO 5806021
Telescopic	3-27/32" (98 mm)	78-3/4" (2000 mm)	Clear Anodized	BO 5802041
Telescopic	3-27/32" (98 mm)	118-3/32" (3000 mm)	Clear Anodized	BO 5803041
Telescopic	3-27/32" (98 mm)	157-15/32" (4000 mm)	Clear Anodized	BO 5804041
Telescopic	3-27/32" (98 mm)	236-7/32" (6000 mm)	Clear Anodized	BO 5806041

## MasterTrack® BT Supplementary Profile for Fixed Sidelights

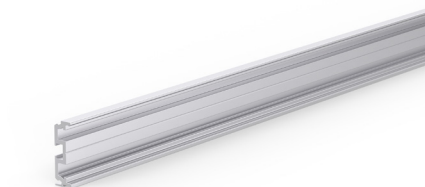


This supplementary profile can be attached either to one or both sides of the MasterTrack® BT running track and enables inserting and stabilizing fixed sidelights.

- Max. door weight: 264.5 lbs (120 kg)
- Glass thickness: 5/16" - 3/8" (8 - 10 mm)

APPLICATION	LENGTH	FINISH	ITEM
Standard / Telescopic	78-3/4" (2000 mm)	Clear Anodized	BO 5802031

## MasterTrack® BT Wall Distance Profile



The wall distance profile increases the distance between wall and glass by 5/16" (8 mm).

- Max. door weight: 264.5 lbs (120 kg)

APPLICATION	LENGTH	FINISH	ITEM
Standard / Telescopic	78-3/4" (2000 mm)	Clear Anodized	BO 5802061

## MasterTrack® BT Profile Set for installation flush with the ceiling

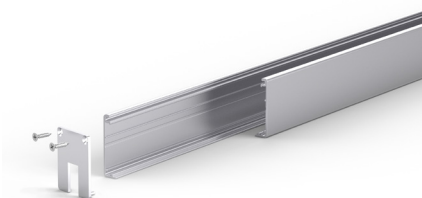


The MasterTrack® profile set includes all required profiles for flush ceiling installation with one guide, including two optional retainers for fixed glazings.

- Max. door weight: 264.5 lbs (120 kg)
- Includes support profile for fixed sidelights

APPLICATION	LENGTH	FINISH	ITEM
Installation for one door	118-3/32" (3000 mm)	Clear Anodized	BO 5803051
Installation for one door	236-7/32" (6000 mm)	Clear Anodized	BO 5806051
Installation for two doors	118-3/32" (3000 mm)	Clear Anodized	BO 5803061
Installation for two doors	236-7/32" (6000 mm)	Clear Anodized	BO 5806061

## MasterTrack® BT Snapframe and Cover Caps for pair of Glass Clamps



Special snapframes and cover caps which can be directly attached to the glass clamps. Important: please order the pair of glass clamps (BO 5800001) separately (not included in delivery).

- Max. door weight: 264.5 lbs (120 kg)
- Glass door thickness: 5/16" - 3/8" (8 - 10 mm)
- 1 Cover cap for 5/16" and 1 cap for 3/8" clamps (Pocket Door Application)

APPLICATION	LENGTH	FINISH	ITEM
Standard	48-13/16" (1240 mm)	Clear Anodized	BO 5801271

## MasterTrack® BT Cover Caps



The cover caps included in the MasterTrack® BT Series can be mounted quickly and easily. They are available in different sizes depending on the application.

APPLICATION	LENGTH	FINISH	ITEM
Standard / Telescopic	3-11/32" x 1-21/32" (85 x 42 mm)	Clear Anodized	BO 5804281
Standard / Telescopic	3-11/32" x 1-31/32" (85 x 50 mm)	Clear Anodized	BO 5805081
Standard / Telescopic	3-11/32" x 2-3/8" (85 x 60.5 mm)	Clear Anodized	BO 5806081

## MasterTrack® FT & MasterTrack® BT Bottom Guide



The bottom guide consists of two separate pieces. Suitable for both MasterTrack FT and BT applications.

FINISH	ITEM
Clear Anodized	BO 5700005
Matte Black Anodized	BO 5700010
Brushed Stainless Anodized	BO 5700024

# MasterTrack® BT Accessories

## MasterTrack® BT Carriages

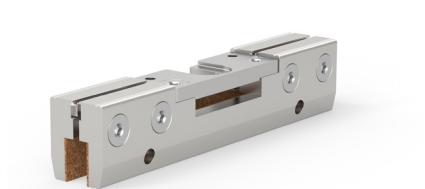


High quality carriage for all MasterTrack® BT applications

- Max. door weight: 264.5 lbs (120 kg)

APPLICATION	ITEM
Standard / Telescopic / Flush with the ceiling	BO 5800002

## MasterTrack® BT Glass Clamp



Glass clamp for most MasterTrack® BT applications, including classic wall and ceiling installations, and telescopic applications.

- Max. door weight: 264.5 lbs (120 kg)
- Glass thickness door: 5/16" - 1/2" (8 - 12.76 mm)

APPLICATION	ITEM
Standard / Telescopic	BO 5800001

## MasterTrack® BT Glass Clamp Sets for installation flush with the ceiling



Glass clamps for mounting MasterTrack® BT flush with the ceiling in combination with Profile Sets for flush mounting. The set also includes the bottom guide for one door.

- Max. door weight: 264.5 lbs (120 kg)
- Glass thickness door: 5/16" - 3/8" (8 - 10 mm)
- Includes Bottom Guide

APPLICATION	ITEM
Flush with the ceiling for 1 door panel	BO 5800011
Flush with the ceiling for 2 door panels	BO 5800012

## MasterTrack® BT Carriages incl. Damping Mechanism



Optional metal dampers for all MasterTrack® BT applications. Equipped with hydraulics and double-sided spring guidance. The sliding door is braked by the damper in one smooth, fluid movement. A self-closing damper replaces a standard carriage.

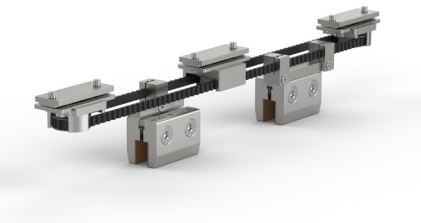
Minimum door width:

132.2 lbs (60 kg): cushioning on one side = 19-11/16" (500 mm) / cushioning on both sides = 24-19/32" (625 mm)  
176.4 lbs (80 kg): cushioning on one side = 22-1/16" (560 mm) / cushioning on both sides = 30-23/32" (780 mm)  
264.5 lbs (120 kg): cushioning on one side = 23-5/8" (600 mm) / cushioning on both sides = 32-15/32" (825 mm)

- High quality hydraulics
- Double-sided spring guidance
- A closing damper replaces a standard carriage

MAX. DOOR WEIGHT	ITEM
132.2 lbs (60 kg)	BO 5800060
176.4 lbs (80 kg)	BO 5800080
264.5 lbs (120 kg)	BO 5800120

### MasterTrack® BT Synchro Accessories Set

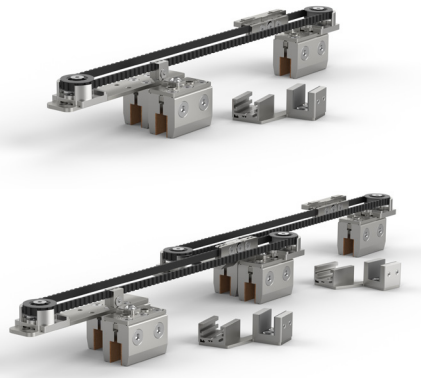


Optional synchronous deflection for simultaneous opening and closing of two door panels. Suitable for the classic wall or ceiling mounting.

- Max. door weight: 264.5 lbs (120 kg)

APPLICATION	ITEM
Standard / Flush with the ceiling	BO 5800005

### MasterTrack® BT Telescope Accessories Set



Accessory set for simultaneous opening and closing of two doors in telescopic alignment with two guides.

- Max. door weight: 264.5 lbs (120 kg)
- Glass thickness door: 5/16" - 3/8" (8 - 10 mm)

APPLICATION	ITEM
Telescopic for two doors	BO 5800006

Accessory set for simultaneous opening and closing of three doors in telescopic alignment with two guides

- Max. door weight: 264.5 lbs (120 kg)
- Glass thickness door: 5/16" - 3/8" (8 - 10 mm)

APPLICATION	ITEM
Telescopic for three doors	BO 5800007

### MasterTrack® BT Adaptor for wall mounting

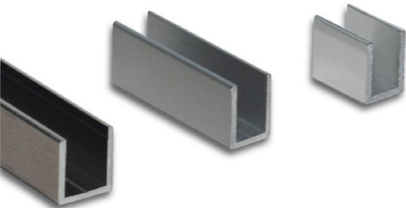


Used for mounting telescopic applications with two guides to a wall.

- Max. door weight: 264.5 lbs (120 kg)
- 5 adaptors per metre necessary

APPLICATION	ITEM
Telescopic	BO 5800010

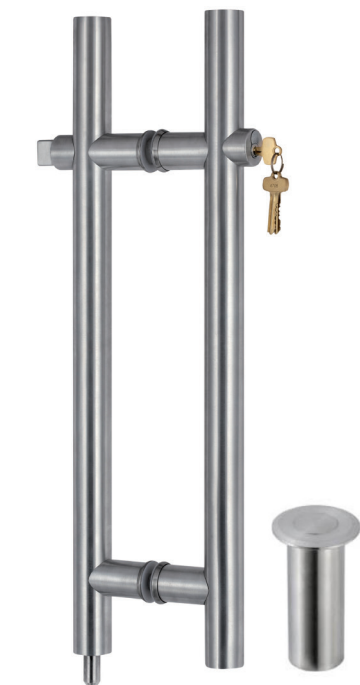
### Bohle Sidelite U-Channel



LENGTH	FINISH	ITEM
1" x 1" x 120"	Matte Black Anodized	BA 6703447
1" x 1" x 120"	Brushed Stainless Anodized	BA 6703446
1" x 1" x 120"	Satin Anodized	BA 6703444

# Additional Products

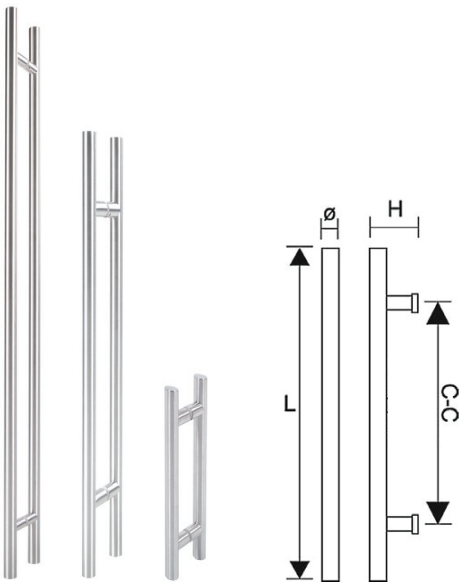
## Locking Ladder Pull



- Bottom locking
- For glass doors
- Glass fabrication: for 1/2" glass - 1" diameter hole at lock, 5/8" diameter hole at bottom post
- Functions Keyed Outside/Thumb turn inside - standard or ADA
- Three keys are included: two for the lock and one cylinder removal key for the 7-pin, 1-1/4" cylinder
- US Standard Cylinder, interchangeable core
- Includes Dust Proof Strike

GLASS THICKNESS	FINISH	HEIGHT	C to C	ITEM
1/2"	Brushed Stainless Steel	48"	36"	BA 5213317
1/2"	Matte Black	48"	36"	BA 5213318

## Back-to-Back Ladder Pulls



- Made of stainless steel in three finishes: brushed stainless steel, polished, matte black
- 1-1/4" (32 mm) diameter
- Glass fabrication: 5/8" (15 mm diameter hole)

LENGTH (L)	DIAMETER (Ø)	C to C	PROJECTION (H)	FINISH	ITEM
12"	1-1/4"	6"	2-1/2"	Brushed Stainless Steel	BA 5213322
12"	1-1/4"	6"	2-1/2"	Polished	BA 5213323
12"	1-1/4"	6"	2-1/2"	Matte Black	BA 5213350
24"	1-1/4"	12"	2-1/2"	Brushed Stainless Steel	BA 5213324
24"	1-1/4"	12"	2-1/2"	Polished	BA 5213325
24"	1-1/4"	12"	2-1/2"	Matte Black	BA 5213319
36"	1-1/4"	24"	2-1/2"	Brushed Stainless Steel	BA 5213326
36"	1-1/4"	24"	2-1/2"	Polished	BA 5213327
36"	1-1/4"	24"	2-1/2"	Matte Black	BA 5213320
48"	1-1/4"	36"	2-1/2"	Brushed Stainless Steel	BA 5213328
48"	1-1/4"	36"	2-1/2"	Polished	BA 5213329
48"	1-1/4"	36"	2-1/2"	Matte Black	BA 5213321
60"	1-1/4"	48"	2-1/2"	Brushed Stainless Steel	BA 5213340
60"	1-1/4"	48"	2-1/2"	Polished	BA 5213352
60"	1-1/4"	48"	2-1/2"	Matte Black	BA 5213351
72"	1-1/4"	60"	2-1/2"	Brushed Stainless Steel	BA 5213342
72"	1-1/4"	60"	2-1/2"	Polished	BA 5213354
72"	1-1/4"	60"	2-1/2"	Matte Black	BA 5213353

## Flush Mount Handle



- Closed type, threaded design
- Ideal for sliding doors where ladder pulls will not accommodate
- Drill hole required: 2" (50 mm)
- Stainless Steel .304

GLASS THICKNESS	FINISH	HEIGHT	OUTER DIAMETER	ITEM
5/16" - 1/2"	Brushed Stainless Steel	9/32"	2-9/16"	BO 5214217N

## Bohle Duplocoll®



Product attributes:

- Thickness: 1/8" (3 mm)
- Color: Transparent
- Roll Length: 39' 4-7/16" (12 m)
- For many different applications, such as all-glass partition walls, showers, furniture, and more
- For many different materials, such as glass, plastic, aluminum, wood, or ceramic
- High transparency due to a light refractive index virtually identical to glass
- Antimicrobial effect inhibits the growth of microorganisms
- Resistant to chemicals and softeners
- Excellent initial tack, lasting ultimate bonding strength
- Elongation of up to 500% and highly split resistant
- By sealing the edges of the adhesive tape, Duplocoll® becomes dry after adhesion and resistant to external influences
- Also suitable for rough surfaces. The viscoelastic adhesive film distributes evenly across rough surfaces.

Max. allowable continuous temperature: -40 °F to + 300 °F (-40 °C to + 150 °C)

FOR GLASS THICKNESS	ITEM
5/16" - 3/8"	BO 5207938
7/16" - 1/2"	BO 5207935

## Applicator Tool for Bohle Duplocoll®



FOR GLASS THICKNESS	ITEM
5/16" - 3/8"	BO 5207939N
7/16" - 1/2"	BO 5207946N



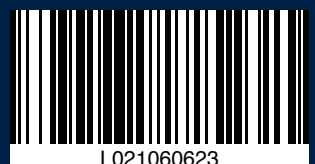
Bohle | Portals

10924 Granite Street, Suite 200, Charlotte, NC 28273  
925 Lydia Ave, Kansas City, MO 64106

T +1 888 838 6006

[info@bohle-america.com](mailto:info@bohle-america.com)  
[www.bohle-america.com](http://www.bohle-america.com)

**Bohle** | portals



2023-0008-US